



ALLEN STEAM TURBINES

STEAM TURBINE SOLUTIONS

Your trusted partner in Steam Turbine Solutions



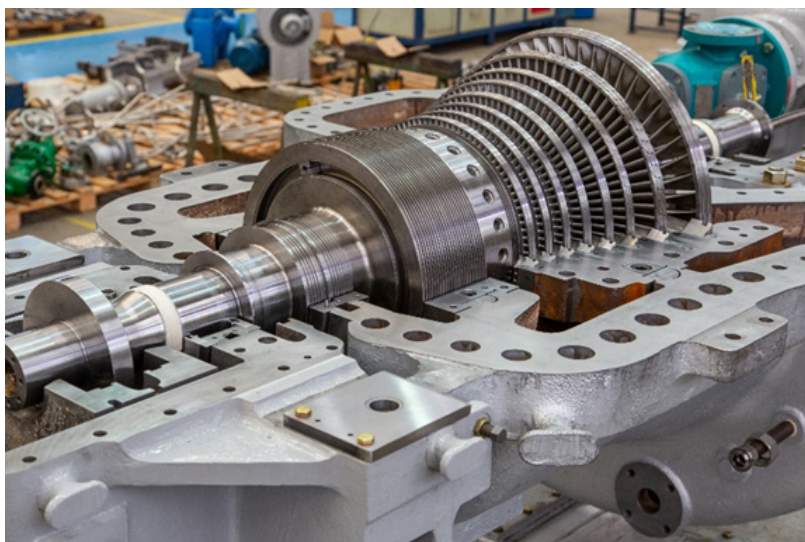
Allen Steam Turbines™ Facility, Bedford, UK.

Trillium Flow Technologies Legacy Brand **Allen Steam Turbines™** was established at the Queen's Engineering Works, Bedford UK in **1894**. The company has a long and distinguished history supplying steam turbines including service of the existing OEM fleet together with other manufacturer's machines throughout Europe and the World.

With an extensive knowledge and expertise in steam turbines established from the installed fleet (WH Allen, Allen-KKK & SSK ranges, and NG-Allen) Allen Steam Turbines™ specialises in providing high integrity custom solutions for the maintenance and repair of all industrial steam Turbine manufacturers' products. New machines are provided in collaboration with NG Metalurgica for power generation and mechanical drive.

Allen Steam Turbines supports the current Naval Nuclear Submarine fleet with Steam Turbine Turbo Generator units providing comprehensive aftermarket, support of spares and overhaul work. Aftermarket coverage comprises rotating and stationary components, Combine Stop & Emergency Valves (CSEV's) and associated ancillaries.

The project and engineering solution team ensure a comprehensive range of services from initial site surveys through to long terms service arrangements. Services are carried out in collaboration with customer's existing resources together with other Trillium Flow Technologies facilities as required.



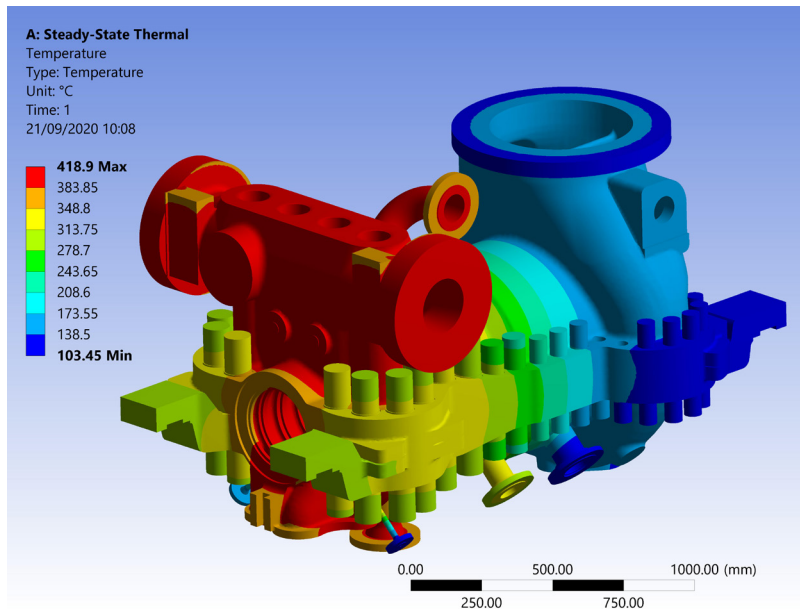
Design Capability



Our complete range of steam turbine services extends into re-rating and upgrading the turbine train in order to meet the revised duty, either to cater for changing process conditions, increased production requirements or to increase the efficiency of the plant or process. With increasing energy costs together with penalties associated with CO₂ emissions there is a powerful case for evaluation and adoption our innovative energy saving techniques.

Re-engineering capability of all rotating and stationary turbine components from complete rotors to individual diaphragms, blade carriers, turbine casings, together with ancillaries and controls. The process we provide includes digital capture of existing parts combined with extensive design expertise ensuring engineered components to suit the original design intent. This is essential when original parts are often too damaged to obtain an accurate profile or when the existing components fail to achieve an acceptable life. This capability enables us to take advantage of developments in manufacturing techniques and upgraded materials.

Modern steam path design and analysis techniques allow us to optimize the steam path of individual machines and recommend a solution to increase the turbine efficiency and the power output.



Service Offerings of Allen Steam Turbines

6. Integrated Service Solutions / Total Value Maintenance Support

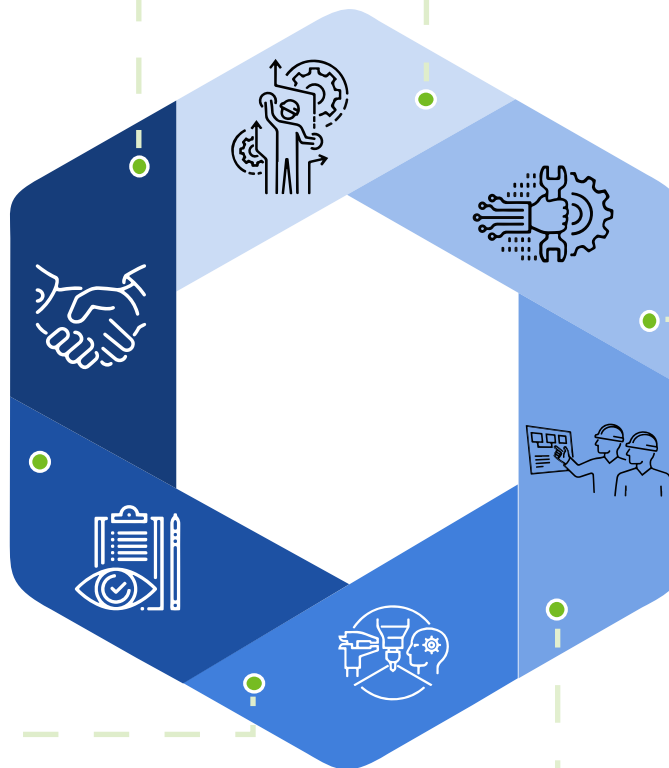
- Sale of refurbished/second-hand machines Turbines up to 150 MW
- Embedded Engineering resource under contract
- Management Service Engineers
- Augmented reality technical specialist support

5. Inspection and Monitoring

- Condition Monitoring
- NDT and Investigative Analysis
- Operational Performance and Vibration Testing
- Advanced Analytics

4. Product Service Training

- Collaborative classroom and workshop training
- Steam turbine systems and theory
- Application and Issues encountered
- Augmented and Virtual Reality Solutions



1. Field service

- Overhaul, maintenance and breakdown support
- Installation and commissioning of new steam turbine drive train
- OE Turbine Qualified Service Technicians/Operatives
- Activities undertaken at site: NDT, performance testing, strip overhauls and repair
- Augmented reality support by remote specialist and Engineering Team
- Site diagnosis and data analysis

2. Workshop and Site repairs

- Spare parts supply including Reverse Engineering and Re-Engineering
- Comprehensive project overhaul and outage management
- Workshop repairs and spare part inventory management
- Extensive qualified supply chain supporting full range site outage activities.

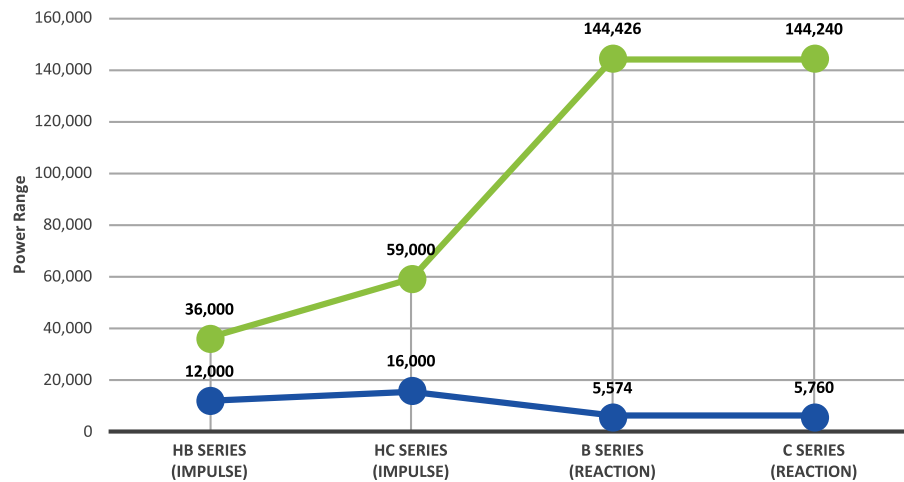
3. Engineering and Technical support

- Design studies – upgrades, re-rates incorporating CFD/FEA
- Turbine Thermodynamic modelling
- Machine operation and Performance reviews
- Mechanical, Electrical including Control System upgrades/support
- RCA and Reliability Analysis

NG Allen Technology

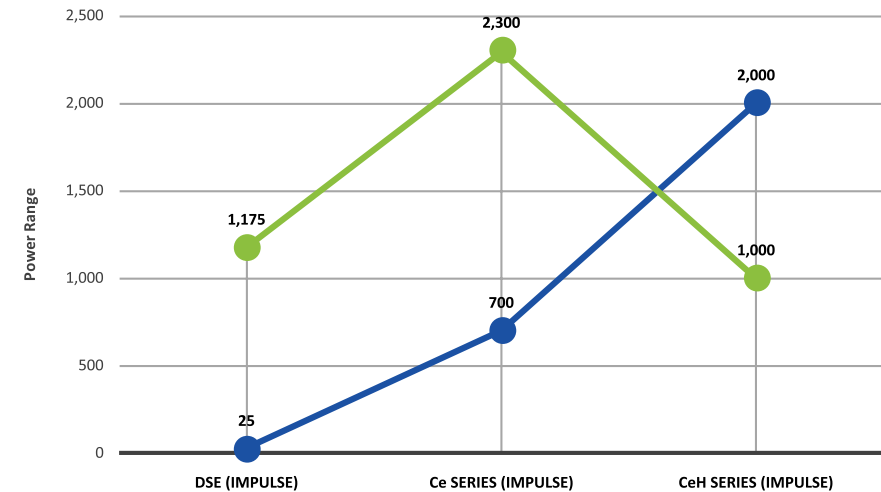
NG Metalurgica and Allen Steam Turbines™ have been working together closely as technical partners for several decades. The machines now being brought to the market are a development of the **ALLEN modular range** with many improvements and upgrades to comply with **international standards**.

INDUSTRIAL MULTISTAGE TURBINE RANGE



	CONDENSING; 86 bar(a)/520 °C MAX INLET CONDITIONS	CONDENSING; 86 bar(a)/520 °C MAX INLET CONDITIONS	BACKPRESSURE; 120 bar(a)/540 °C MAX INLET CONDITIONS	CONDENSING; 120 bar(a)/540 °C MAX INLET CONDITIONS
Min Kw	12,000	16,000	5,574	5,760
Max kW	36,000	59,000	144,426	144,240

INDUSTRIAL SINGLE-STAGE TURBINE RANGE



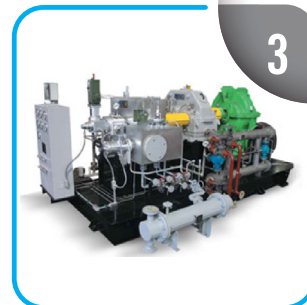
	BACKPRESSURE; 43 bar(a)/400 °C MAX INLET CONDITIONS	BACKPRESSURE; 50 bar(a)/400 °C MAX INLET CONDITIONS	BACKPRESSURE; 120 bar(a)/520 °C MAX INLET CONDITIONS
Min Kw	25	700	2,000
Max kW	1,175	2,300	1,000



1



2



3

- B and C Series - Reaction**
140 bar / 540 ° C / up to 145 MW
- M and H Series - Impulse**
90 bar / 520 ° C / 65 MW
- Single Stage**
120 bar / 520 ° C / 3.000 kW

Case Study

Turbine Nozzle Failure – Root Cause Analysis, Performance Improvement.

Customer Challenge

- Turbine nozzle was found to have cracks on the vane profiles
- Customer requested Root Cause Analysis to be carried out to find the reason why after two years of operation the nozzle vanes experienced failure
- Customer also requested the nozzle to be redesigned to meet the new operating conditions of the plant.

Customer / Site

Waste to Energy Plant in Europe

Applications

Combine Heat and Power Plant

Trillium Solution

- Root Cause Analysis to find the solution
- Re-design the turbine nozzle for long time operation and better efficiency
- Project management and Manufacture from design to site commissioning of solution

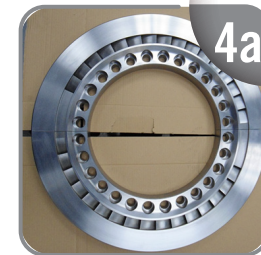
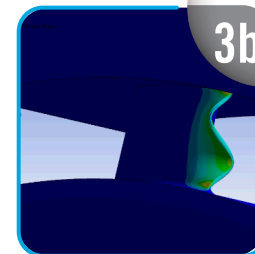
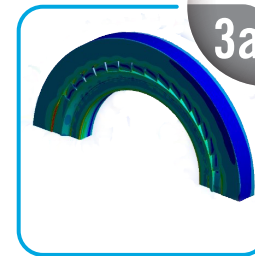
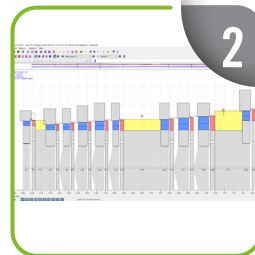
Trillium Offering

- Root Cause Analysis
- Problem Solving
- Turbine Performance Improvement

Customer Benefit

- The turbine with re-designed nozzle has been operating without any issues.
- The turbine reliability and availability have been improved
- The turbine performance has been improved by circa 4%.

1. Problem Identification - Cracked
2. Thermodynamic/Aerodynamic Steam Path Design
3. Stress and Modal Analysis
4. Newly Manufactured Nozzle



Case Study

Re-engineering & Steam Path Optimisation

Customer Challenge

- End of turbine life
- Risk of lack of production
- Risk of mechanical failure
- Poor turbine performance

Customer / Site

Fertilizer Plant/ Egypt

Applications

Generator drive

Trillium Offering

Turbine Re-Rate
Life Extension

1. Data capture third party machine
2. Obtaining Geometry by means of 3D scanning
3. Steam Path Optimisation
4. 3D CAD Design
5. Manufacturing

Trillium Solution

- Capture critical geometry and design functionality
- Re-engineering of the steam path (third party machine)
- Steam path optimisation for best performance
- Project management and Manufacture from design to site commissioning of solution

Customer Benefit

- The life of steam path components has been extended for next 20 years
- Significant cost saving
- The turbine reliability and availability have been significantly improved
- New turbine rotor, diaphragms, nozzle, end glands haven been manufactured and fitted



Case Study

New Steam Turbine Package Installation

Customer Challenge

- Improve plant operational efficiency
- Large volume of low-grade excess steam
- Limited time to show profitability of site

Customer / Site

Paper Mill / UK

Applications

Power Generation

Trillium Offering

New steam turbine, generator, reduction gearbox Condenser, vacuum skid and control system

1. New Turbine delivered to site
2. New turbine drive train installed at site

Trillium Solution

- Low pressure condensing NG Allen turbine
- Compact well organised installation and commissioning schedule
- High efficiency gearbox and generator
- Design and Installation complete new 11 MW Steam Turbine Drive Train

Customer Benefit

- Allowed the site to remain open and become profitable
- Completed ahead of schedule
- Turbine produced additional kWh resulting in further financial benefit.



Case Study

Replacement 3rd Party Turbine Installation

Customer Challenge

- 3rd Party OEM overhaul exceeded economics and delivery of a new NG Allen machine.
- Work within the physical constraints of the existing installation.
- Execution of the site activities whilst the plant continued to operate in bypass mode

Trillium Solution

- Critical execution program including dedicated engineering team
- Customized package to meet the customer expectations
- Experienced team to carry out the site activities

Customer Benefit

- Minimal disruption to the plant
- Short effective lines of communication
- Installed and commissioned ahead of schedule

Customer / Site

Waste to Energy Plant in Europe

Applications

Combine Heat and Power Plant

Trillium Offering

Removal and replacement of an existing aged 3rd party turbine

1. Waste to Energy CHP Plant.
2. Turbine to be replaced.
3. New NG-Allen Steam Turbine.



Case Study

Turbine Overhaul / Upgrade

Customer Challenge

- LP turbine had suffered severe erosion/corrosion
- Machine was being operated outside the original design parameters
- Control system was no longer supported

Trillium Solution

- Performance review of LP turbine
- Supply of a new LP casing in an upgraded material
- Upgrade the control system with digital type devices
- Project management of all onsite activities

Customer Benefit

- Extend the life of the machine
- Reliability of the machine
- Reduce future overhaul time and investment

Customer / Site

Waste to Energy Plant in Europe

Applications

Combine Heat and Power Plant

Trillium Offering

- On site overhaul for complete machine train (turbine, gearbox & generator)
- Supply and installation of an upgraded LP cylinder casing
- Upgrade the control system



a) Analog

b) Digital

1. Control System Upgrade
2. Turbine Train
3. Half Joint View
4. New LP Casing Cylinder at our factory

Summary of Technical Capabilities

The Trillium Flow Technologies™ Centre Of Excellence is situated in modern premises in Oakley, Bedfordshire, and from this site support customers in varying industries including Biomass, Waste to Energy, Combined Heat & Power (CHP), Chemical, Sugar, Paper and Pulp and Naval Marine in compliance with international Quality and SHE standards. When required the steam turbine business is additionally supported by an extensive global network of Trillium Flow Technologies™ facilities.



Trillium Flow Technologies - Bedford

Highfield Parc, Highfield Road, Oakley, Bedford,
MK43 7TA, UK

T. +44 (0) 1234 826 691

Service Locations

Trillium Flow Technologies - Alloa

The Harlands, Alloa,
Clackmannanshire, FK10 1TB, UK

T. +44 (0) 1259 722 100

Trillium Flow Technologies - Canada

3750A Laird Drive, Unit 16 Mississauga,
ON, L5L 0A6 Canada

T. +1 905 625 7202

Trillium Flow Technologies Korea, Inc.

151, Beomjigi-ro, Danwon-gu Ansan-si,
Gyeonggi-do KOREA 15434

T. +82 31 478 1100

Trillium Flow Technologies France SAS

106 Boulevard Paul Raphel
13730 Saint Victoret, France

T. +33 442 070 095

Trillium Pumps Italy S.R.L.

Via M.G. Agnesi n.1
20834 Nova Milanese (MB) Italy

T. +39 0362 1733 1

Trillium Flow Technologies China

Hongqiao Wantong Center Room 307, Block C, Building 1,
No.333 Suhong Road, Minhang District, Shanghai 201106 China

T. +86 21 64887898

Trillium Flow Technologies™ – Deer Park Service Center

920 Seaco Ave. Deer Park,
Texas 77536 USA

T. 8324291000

Trillium Flow Technologies South Africa (Pty) Ltd

92A Rand Street Extention 11
Middelburg, 1050 South Africa

T. +27 10 822 7000



E. steamturbines@trilliumflow.com

www.trilliumflow.com

We reserve the right to make technical changes or modify the contents of this document without prior notice. The document and its text, images, diagrams, data and information it contains must not be copied or reproduced in whole or in part, in any form or by any means, without the prior written consent of Trillium Flow Technologies.

© Copyright 2019. All rights reserved.