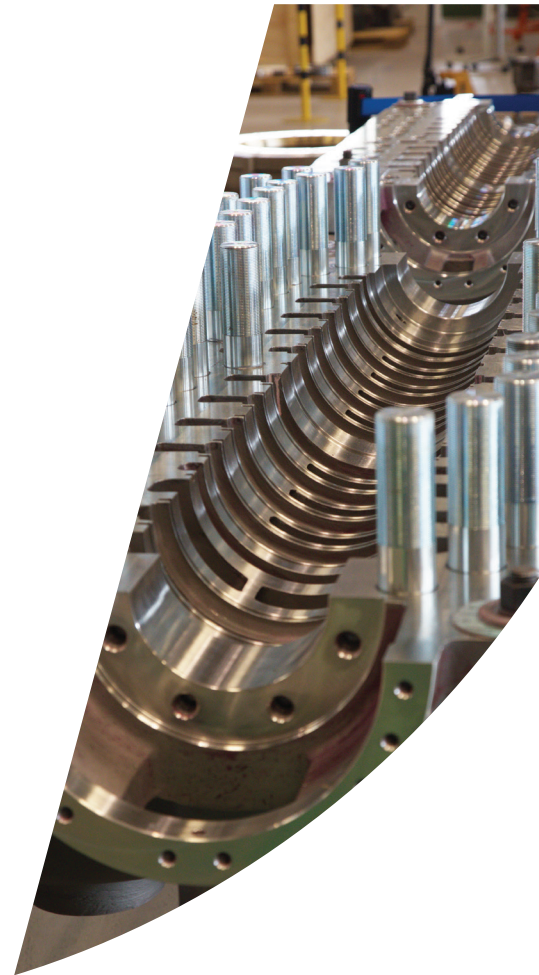


# ROTO-JET® RO-FT HIGH PRESSURE PITOT TUBE PUMPS

MODEL RG 2X2  
GREASE LUBRICATED



# HIGH PRESSURE SINGLE-STAGE CENTRIFUGAL PUMP WITH ADVANCED PITOT TUBE TECHNOLOGY

## ADVANCED DESIGN

- High-pressure without high speed
- Flexible: performance can be adjusted by changing the pitot tube
- Simple: only two basic working parts

## DEPENDABLE PERFORMANCE

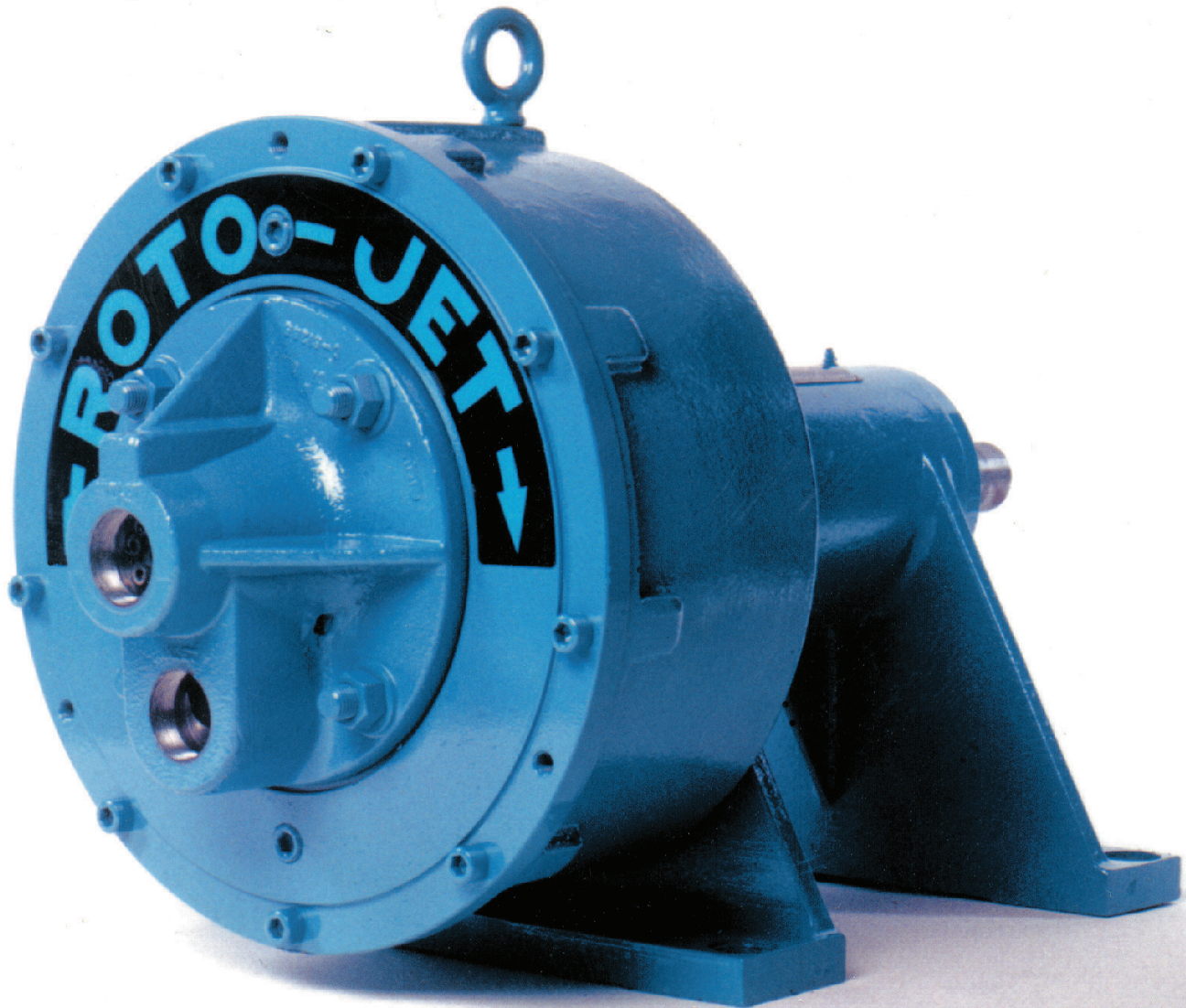
- Hydraulically stable along the entire performance curve and beyond BEP
- Low minimum flow requirement
- Rugged design: most reliable high-pressure pump in the marketplace

## ENHANCED RELIABILITY

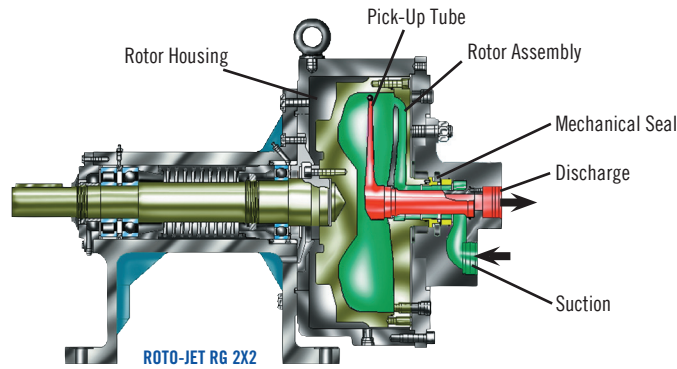
- Smooth, pulsation-free flow
- Low-pressure mechanical seal is easily maintained
- Isolated bearing pedestal to minimize risk of bearing contamination

## RG 2X2 PUMP FEATURES

- Single mechanical seal
- Threaded connections
- Grease lubricated bearings

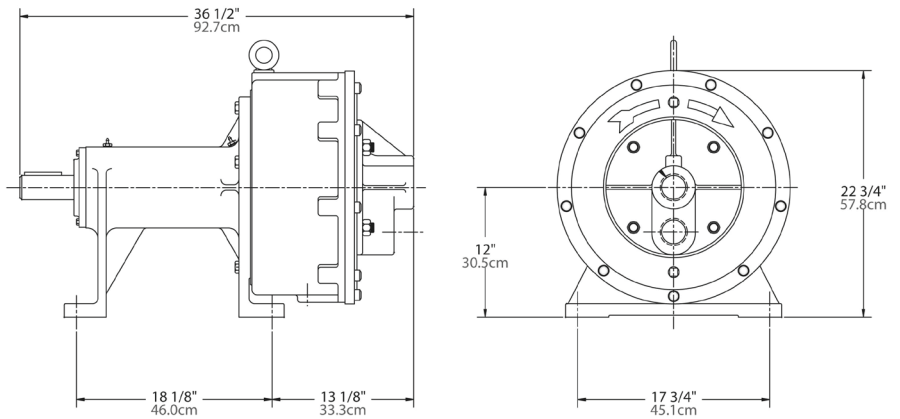






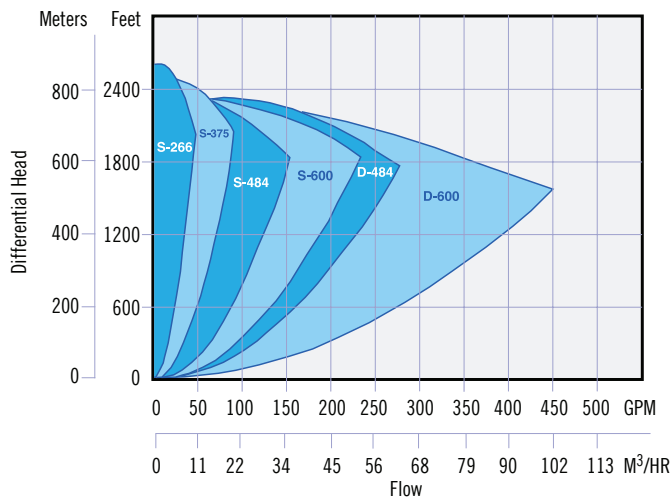
### TYPICAL ROTO-JET MODEL RG 2X2 APPLICATIONS

- Food and beverage cleaning systems
- Reverse osmosis systems
- Automotive gun drilling coolant
- Spraying / washing systems
- High-pressure paper shower
- Circuit board wash systems
- Water / process injection systems
- Seal flushing systems
- Boiler feed / cleaning systems
- Many more applications



Dimensions are for general reference only and will vary with actual model selected

### OPERATING RANGE



#### SPECIFICATIONS: ROTO-JET MODEL RG 2X2

Maximum temperature	180° F	82° C
Maximum suction pressure	200 PSI	14 BAR
Maximum head	2600 Ft.	792 m
Maximum speed	4380 RPM	4380 RPM
Maximum Flow	400 GPM	91 m3/hr
Maximum horsepower	400 HP	300 KW
Weight	870 lbs.	395 kg

#### MATERIALS OF CONSTRUCTION

	STANDARD
Rotor	Ductile Iron
Rotor cover	Ductile Iron
Manifold	Ductile Iron
Endbell	Ductile Iron
Pick-up tube*	17-4 PH
Shaft	AISI 4140

\* Also available in 718 Inconel



## TRILLIUM PUMPS USA, Inc.

2495 S. Golden State Blvd.  
Fresno, CA 93706 USA  
T: +1 559 442 4000  
F: +1 559 442 3098  
[rotojet@trilliumflow.com](mailto:rotojet@trilliumflow.com)

[TRILLIUMFLOW.COM](http://TRILLIUMFLOW.COM)